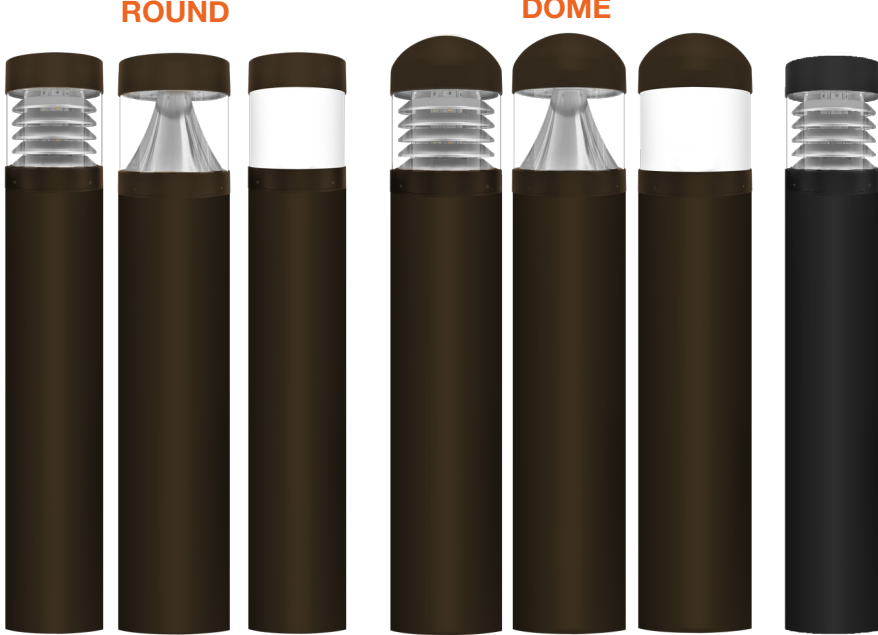


# Bollard Base: Bolt-Line (Round)

## 5 Head Options



| WATT | LUMENS | BUG RATING |          |
|------|--------|------------|----------|
| 12   | 1,560  | LOUVER     | B2-U3-G2 |
| 16   | 2,080  | CONE       | B1-U3-G2 |
| 22   | 2,860  |            |          |

**BL**  
**BLACK**

### Detail Specifications:

- Finish: Bronze, Black, Custom finishes available
- IP Rating: Wet Location
- Beam Angle:
  - Louver: Type II 360°
  - Cone: Type V 360°
- Chip: SMD 2835, R9 >50, CRI >80
- 3 Step MacAdam Ellipses
- Operating Temperature: -4° - 122° F
- Lens: Clear or Frosted
- Average life (L70) of 50,000 hours

### Applications:

- Walkways & Pathways
- Driveways
- Landscape Lighting
- Hospitality, Multi-Family
- Outdoor Corridors
- Residential, Commercial and Industrial

### Product Information:

- Aluminum housing finished with corrosion free powder coat
- Flat or Dome Top Options
- Cone, louver, or frosted illumination
- Instant-On to full brightness
- Select-n-Switch Technology: 5-CCT + 3-Power Selectable

### Driver Options:

- UNV: 120-277V 0-10V Dimmable
- HV: 347-480V 0-10V Dimmable
- THD: <20% (+/-5% tolerance), PF >0.9, 50/60Hz

### Mounting & Installations:

- Mounting hardware included:
  - Anchor Bolt
  - Washer & Nuts

### Certifications:

- UL Listed for USA and CA
- DLC Listed
- Approved for CA T24
- 5 Year Limited Warranty
- FCC CFR 47, GCC Part 15, Subpart B:2017

| Quick Ship Head Options                  | Inside Design                    | Top Shape         | Finish <sup>2</sup>       |
|--|----------------------------------|-------------------|---------------------------|
| <b>LED-BLD-RD-5CCT</b> -<br>Bollard Head | <b>CN</b><br>Cone                | <b>DM</b><br>Dome | <b>BZ</b><br>Bronze       |
|  | <b>LV</b><br>Louver              | <b>FL</b><br>Flat | <b>BL</b><br>Black        |
|  | <b>FR<sup>1</sup></b><br>Frosted |                   | <b>WH</b><br>White        |
|  |                                  |                   | <b>GRY</b><br>Gray        |
|  |                                  |                   | <b>CS</b><br>Custom Color |

1. Frosted lens is made to order  
 2. Bronze & black are quickship. Other colors are made to order.

| Quick Ship Base Options                                  | Finish <sup>2</sup>       | Height              |
|--|---------------------------|---------------------|
| <b>BLD-3P22-RD-UNV</b> -<br>12/16/22W Round Bollard Base | <b>BZ</b><br>Bronze       | <b>22</b><br>22"    |
|  | <b>BL</b><br>Black        | <b>44</b><br>Height |
|  | <b>WH</b><br>White        | <b>44</b><br>Height |
|  | <b>GRY</b><br>Gray        |                     |
|  | <b>CS</b><br>Custom Color |                     |

2. Bronze & black are quickship. Other colors are made to order.

Assembly/ Production Options (Only use this ordering code if you need any of the below options)

**LED-BLD-3P22-RD-5CCT-UNV-CN-FL-BZ-44**

| LED-BLD-3P22-RD-5CCT    | Voltage                | Inside Design        | Top Shape         | Finish <sup>2</sup>       | Height              | Sensor                              | EMB                            |
|-------------------------|------------------------|----------------------|-------------------|---------------------------|---------------------|-------------------------------------|--------------------------------|
| Round Bollard 12/16/22w |                        |                      |                   |                           |                     |                                     |                                |
|                         | <b>UNV</b><br>120-277V | <b>CN</b><br>Cone    | <b>DM</b><br>Dome | <b>BZ</b><br>Bronze       | <b>22</b><br>22"    | <b>(Blank)</b><br>None              | <b>(Blank)</b><br>No           |
|                         | <b>HV</b><br>347-480V  | <b>LV</b><br>Louver  | <b>FL</b><br>Flat | <b>BL</b><br>Black        | <b>44</b><br>Height | <b>BMS</b><br>Bi-Level              | <b>Emergency</b><br>Backup     |
|                         |                        | <b>FR</b><br>Frosted |                   | <b>WH</b><br>White        | <b>44</b><br>Height | <b>90 Minute</b><br>Motion Sensor + | <b>EMB</b><br>Emergency Backup |
|                         |                        |                      |                   | <b>GRY</b><br>Gray        |                     | <b>Daylight</b><br>Sensor           | <b>Backup</b><br>Sensor        |
|                         |                        |                      |                   | <b>CS</b><br>Custom Color |                     | <b>PC</b><br>Photocell              |                                |

| Optional Shield          | Finish <sup>2</sup>        |
|--------------------------|----------------------------|
| <b>180° Spill Shield</b> |                            |
| <b>BLD-RD-SHIELD</b>     | <b>BZ</b><br>Bronze Finish |
| <b>BLD-RD-SHIELD</b>     | <b>BL</b><br>Black Finish  |
| <b>BLD-RD-SHIELD</b>     | <b>WH</b><br>White Finish  |
| <b>BLD-RD-SHIELD</b>     | <b>GRY</b><br>Gray Finish  |
|                          | <b>CS</b><br>Custom        |

2. Bronze & black are quickship. Other colors are made to order.

2. Bronze & black are quickship. Other colors are made to order.

Specs and model numbers are subject to change with or without notice. Customization of product is available.

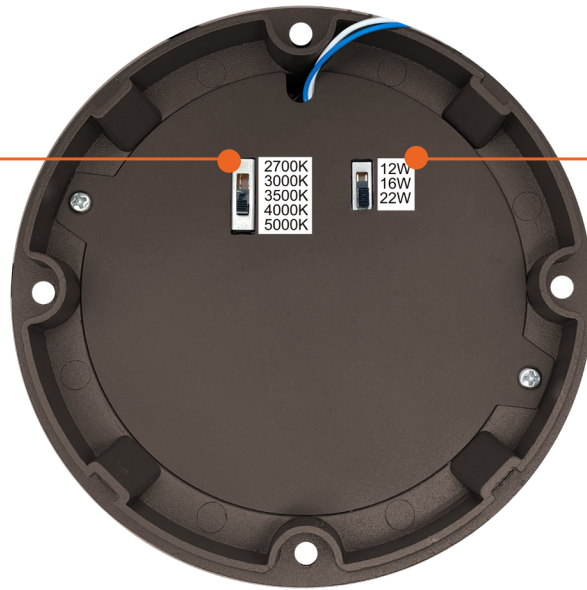
# Bollard Base: Bolt-Line (Round)

## 5 Head Options

### FEATURES

#### 5-CCT Selectable

27/30/35/40/50K



#### 3 Watt Selectable

12/16/22W



LOUVER

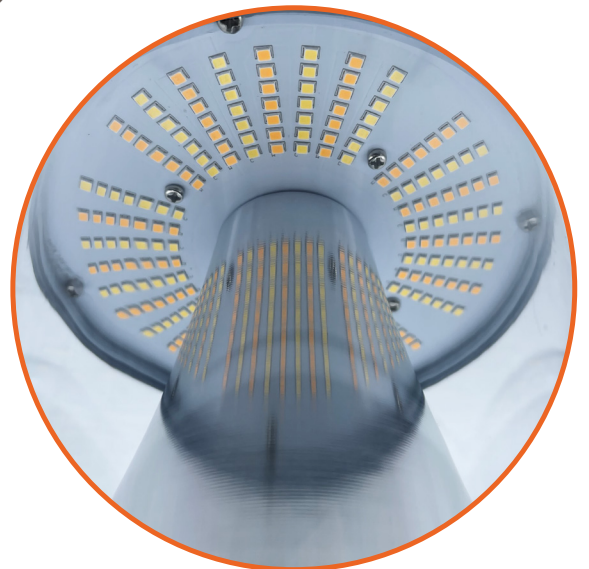


CONE



FROSTED LENS

#### ROUND FLAT



CONE LENS LED

#### ROUND DOME



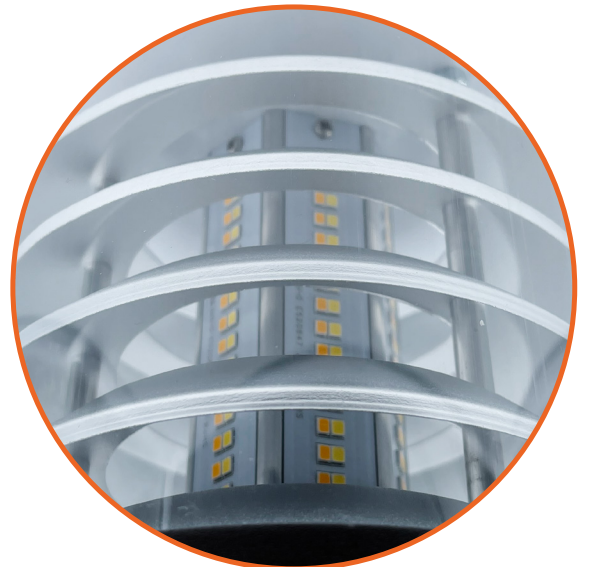
LOUVER



CONE



FROSTED LENS

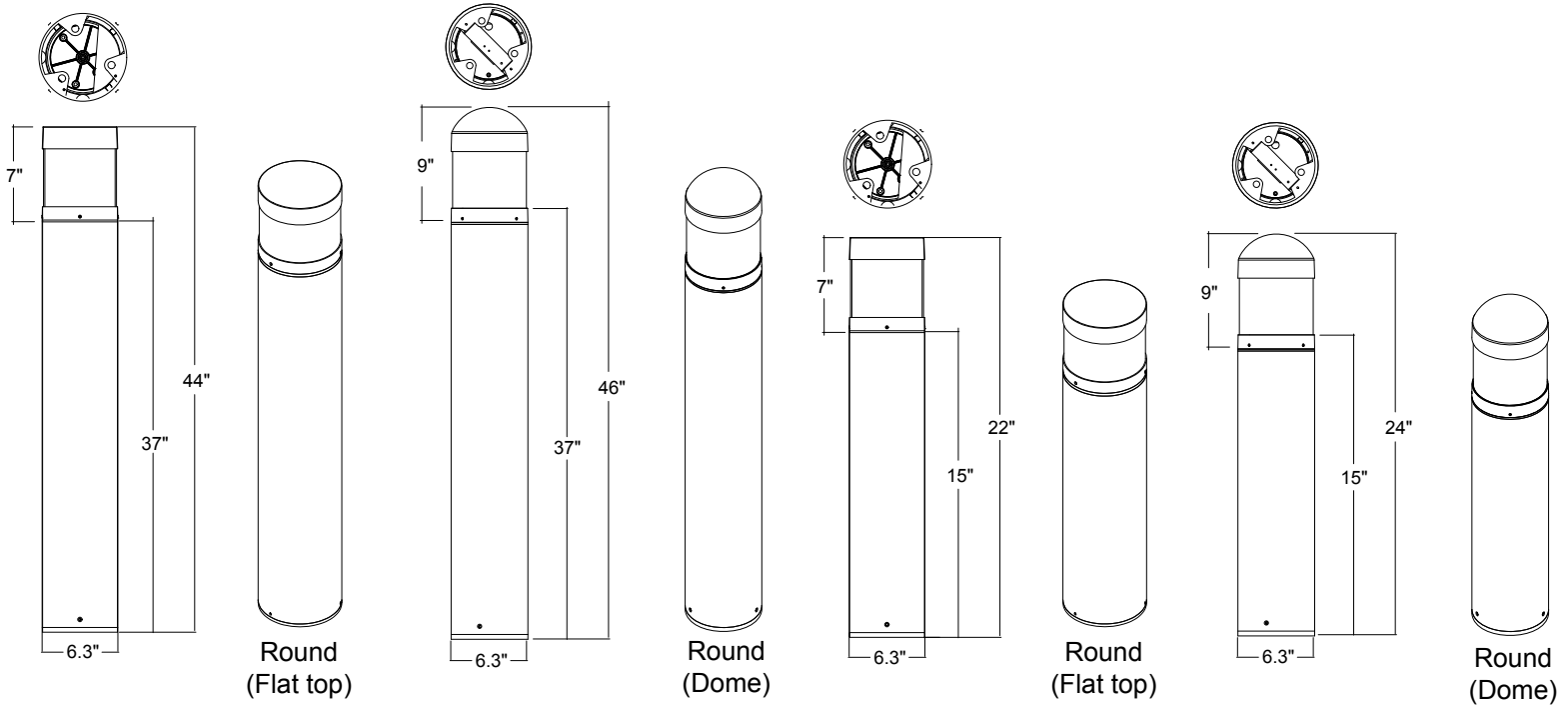


LOUVER LENS LED

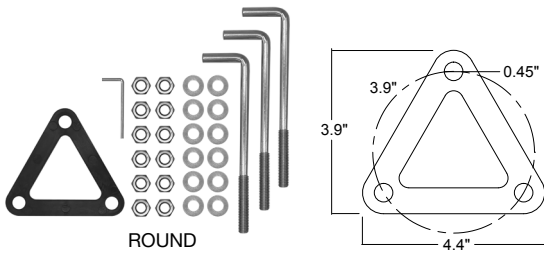
# Bollard Base: Bolt-Line (Round)

## 5 Head Options

### DIMENSIONS



### ACCESSORIES



**Anchor Bolt Included**



**HD-407V-CR  
Sensor**



**LED-EMB-8W-LV-INT  
Emergency Back Up**

### Round Bollard Base

| Model                 | Voltage  | Watts     | Lumens         | CRI |
|-----------------------|----------|-----------|----------------|-----|
| BLD-3P22-RD-UNV-BZ-22 | 120-277V | 12/16/22w | 1560/2080/2860 | >80 |
| BLD-3P22-RD-UNV-BZ-44 | 120-277V | 12/16/22w | 1560/2080/2860 | >80 |

### Round Bollard Head

| Model                    | Voltage  | Watts     | Lumens         | Color           | CRI |
|--------------------------|----------|-----------|----------------|-----------------|-----|
| LED-BLD-RD-5CCT-CN-DM-BZ | 120-277V | 12/16/22w | 1560/2080/2860 | 27/30/35/40/50K | >80 |
| LED-BLD-RD-5CCT-CN-DM-BL | 120-277V | 12/16/22w | 1560/2080/2860 | 27/30/35/40/50K | >80 |
| LED-BLD-RD-5CCT-LV-DM-BZ | 120-277V | 12/16/22w | 1560/2080/2860 | 27/30/35/40/50K | >80 |
| LED-BLD-RD-5CCT-LV-DM-BL | 120-277V | 12/16/22w | 1560/2080/2860 | 27/30/35/40/50K | >80 |
| LED-BLD-RD-5CCT-CN-FL-BZ | 120-277V | 12/16/22w | 1560/2080/2860 | 27/30/35/40/50K | >80 |
| LED-BLD-RD-5CCT-CN-FL-BL | 120-277V | 12/16/22w | 1560/2080/2860 | 27/30/35/40/50K | >80 |
| LED-BLD-RD-5CCT-LV-FL-BZ | 120-277V | 12/16/22w | 1560/2080/2860 | 27/30/35/40/50K | >80 |
| LED-BLD-RD-5CCT-LV-FL-BL | 120-277V | 12/16/22w | 1560/2080/2860 | 27/30/35/40/50K | >80 |

### H-Line Sensors

| Model     | Item Description  | Voltage  | Watts |
|-----------|---|----------|-------|
| HD407V-CR | Bi Level Motion Sensor w/ Daylight Harvesting<br>Detachable Version w/ external sensor -Remote Control Compatible | 120-277V | <1w   |

### Backup Battery

| Model             | Input    | Watt | Output    |
|-------------------|----------|------|-----------|
| LED-EMB-8W-LV-INT | 120/277V | 8W   | 25-48V DC |