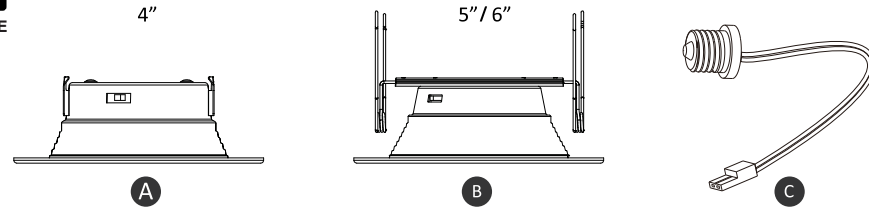




## INSTALLATION INSTRUCTIONS FOR DOWNLIGHTS



### PACKAGE CONTENTS

PART	DESCRIPTION	QUANTITY	PART	DESCRIPTION	QUANTITY
A	4inch Retrofit Downlight (Baffle Trim/Smooth Trim)	1	B	5/6inch Retrofit Downlight (Baffle Trim/Smooth Trim)	1
C	E26 Adapter	1	C	E26 Adapter	1

### DIMMER RECOMMENDATION

This unit may operate on other dimmers we haven't tested with. (Input 120V 60Hz)

<b>LEVITON</b>	6672, RNL06, IPL06, DSL06, 6674
<b>LUTRON</b>	TG-600PR-WH, S-600PR-WH, CTCL-153PDH-WH, TGCL-153PH-LA, SLV-600P-AL, DV-600PR-WH, SCL-153PH-WH, GT-600P, DVCL-153P, MSCL-OP153M, PD-6WCL, MACL-153M//MA-R



PLEASE READ AND UNDERSTAND THIS ENTIRE MANUAL BEFORE ATTEMPTING TO ASSEMBLE, OPERATE OR INSTALL THE PRODUCT.

### Warning:

- WARNING** - Risk of fire or electric shock. Installation of this retrofit kit requires a person familiar with the construction and operation of the luminaire's electrical system and the hazard involved. If not qualified, do not attempt installation. Contact a qualified electrician.
- WARNING** - Risk of fire or electric shock. Install this kit only in the luminaire that has the construction features and dimensions shown in the photographs and/or drawings and where the input rating of the retrofit kit does not exceed the input rating of the luminaire.
- WARNING** - To prevent wiring damage or abrasion, do not expose wiring to edges of sheet metal or other sharp objects. This retrofit kit is accepted as a component of a luminaire where the suitability of the combination shall be determined by authorities having jurisdiction, product must be installed by a qualified electrician in accordance with the applicable and appropriate electrical codes. The installation guide does not supersede local or national regulations for electrical installations.
- WARNING** - Risk of fire or electric shock. Luminaires wiring, power supply, or other electrical parts may be damaged when drilling for installation of retrofit kit hardware. Inspect wiring and components for damage.

Only those open holes indicated in the photographs and/or drawings may be made or altered as a result of kit installation. do not leave any other open holes in an enclosure of wiring or electrical components.

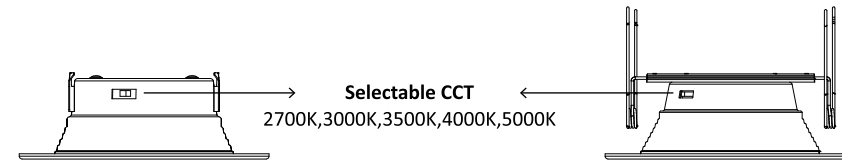
This device is not intended for use with emergency exits.

Do not make or alter any open holes in an enclosure of wiring or electrical components during kit installation. Suitable for Damp Locations.

Make certain power is off from the electrical panel before starting installation or attempting any maintenance.

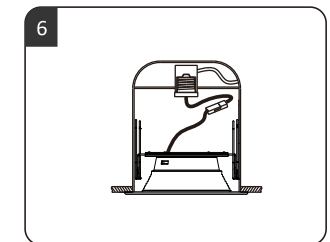
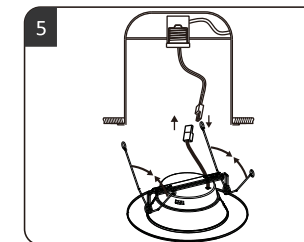
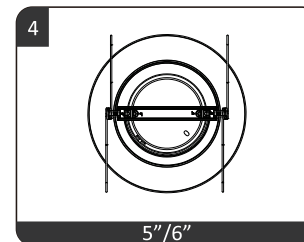
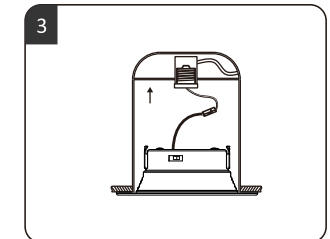
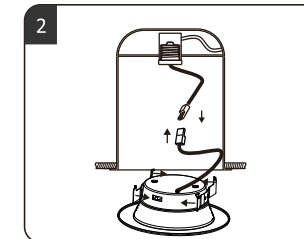
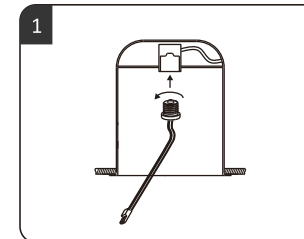
## 5-CCT ADJUSTABLE

Select color desired with the 5-CCT adjustable switch before installation.



## INSTALL INTO HOUSING

- Screw Socket Adapter into existing can socket (FIG. 1)
- Plug female connector of fixture into male connector of socket adapter assembly. (FIG. 2) (FIG. 5)
- For 4" Retrofit:  
Squeeze friction blades to light body (FIG. 3).  
Tuck all wires into can and carefully push retrofit trim into can. To provide enough room in shallow cans, carefully position socket adapter wiring to side of LED driver prior to inserting retrofit trim into the can.
- For 5"/6" Retrofit:  
Squeeze both torsion spring arms together and insert into torsion spring slots (or receiver brackets) of can (FIG. 6).



## REMOVING LED LUMINAIRES

- With fingertips, pull down firmly on the trim ring until the fixture stops.
- Squeeze the torsion springs together to remove the LED fixture.
- Disconnect the fixture from E26 socket adapter.
- Unscrew the E26 socket adapter from the recessed can.