



H-Line: Bi Level Motion Sensor (Internal)



TECHNICAL DATA

OPERATING VOLTAGE	DC: 10.5-15V
OPERATING CURRENT	<30mA
STAND-BY POWER	<0.5W
CONTROL METHOD	ON/OFF 0-10V Dimming
MICROWAVE FREQUENCY	5.8GHz±75MHz
MICROWAVE POWER	<0.3mW
DETECTION AREA	50% / 100%
HOLD TIME	5s / 30s / 1min. / 10min.
DAYLIGHT THRESHOLD	2Lux / 10Lux / 50Lux / Disable
STAND-BY PERIOD	0s / 30s / 20min. / +∞
STAND-BY DIMMING LEVEL	10%(1.9±0.2V) 20%(2.9±0.2V) 30%(3.9±0.2V) 50%(5±0.2V)
MOUNTING HEIGHT	Max. 16ft. (Ceiling Mounted)
DETECTION RANGE	DxH (Radius) 3-7 mx4m/9.84-22.97%ftx 13.12ft. (ceiling mounted)
MOTION DETECTION	0.5~1m/s
DETECTION ANGLE	150° (Wall Mounted) 360° (Ceiling Mounted)
OPERATING TEMPERATURE	-40°F~+176°F
IP RATING	IP20
WARRANTY	3 Years
FUNCTION SETTING	Dial Setting

Factory Default Setting: Detection area 100% / Hold Time 5s / Daylight Threshold Disable
 Stand-By Period 0s / Stand-By Dimming Level 10%



ON/OFF Control



Stand-By Dimming Level



Detection Area



Hold Time



Daylight Sensor



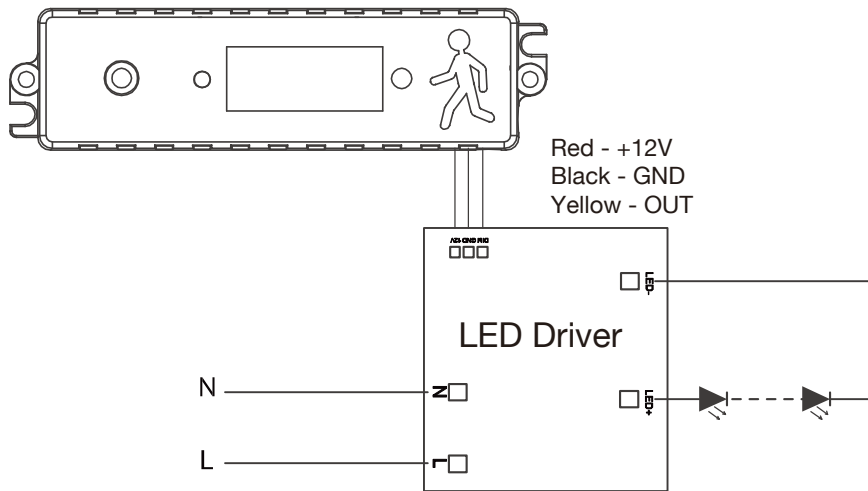
Stand-by Period

Series

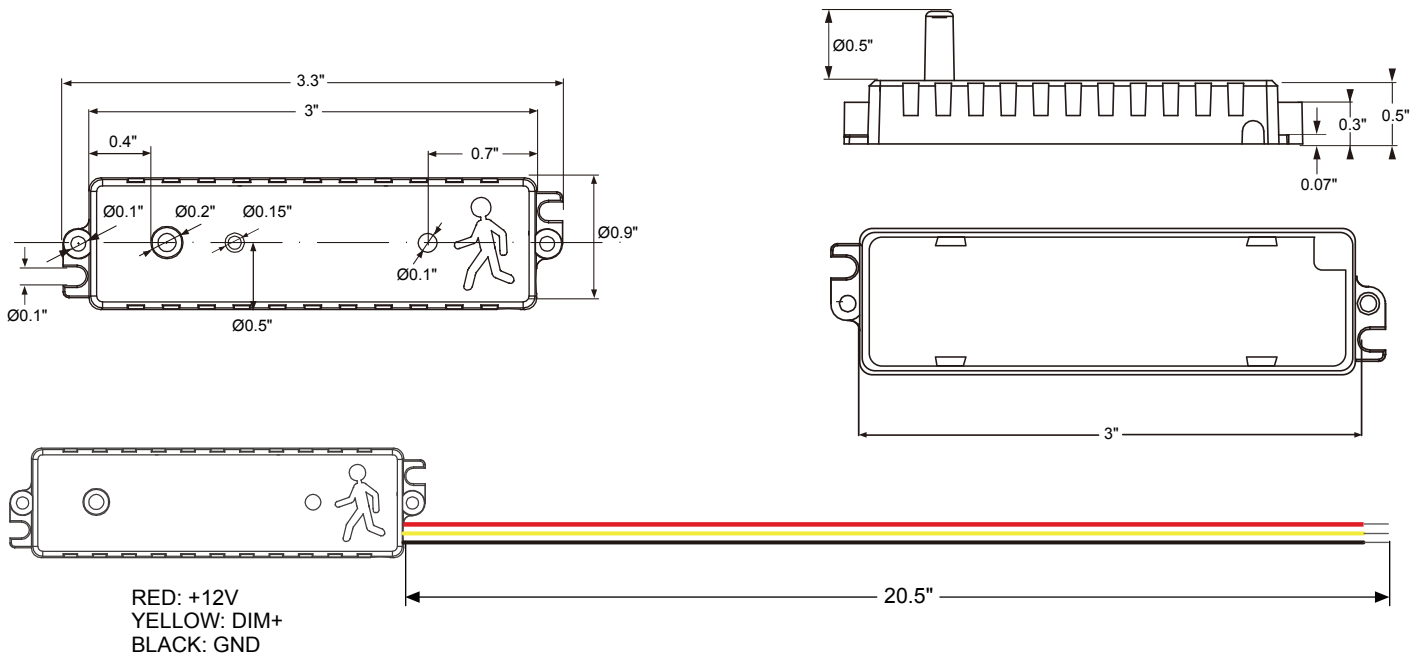
HD016VCR-8

H-Line: Bi Level Motion Sensor (Internal)

INSTALLATION

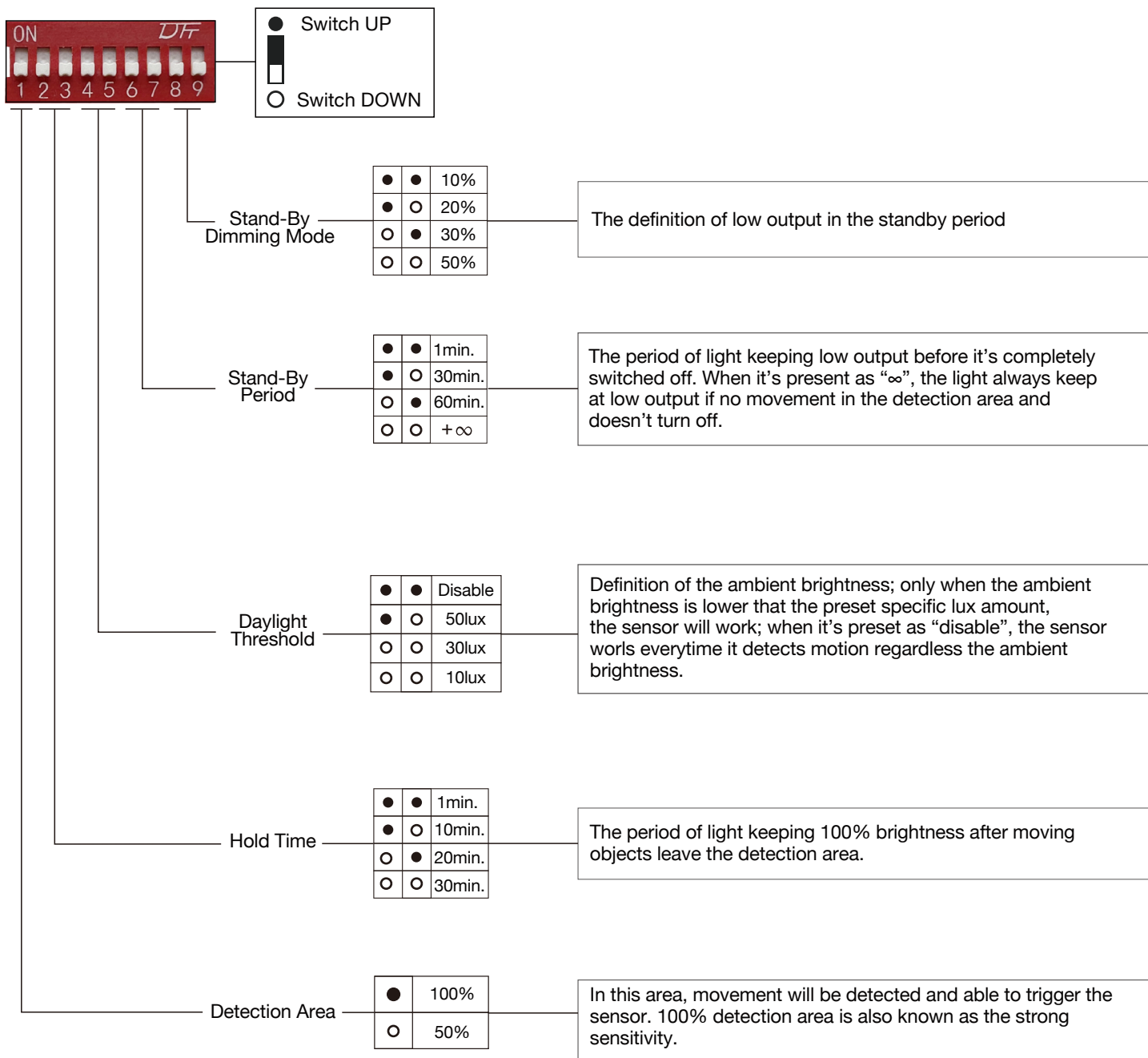
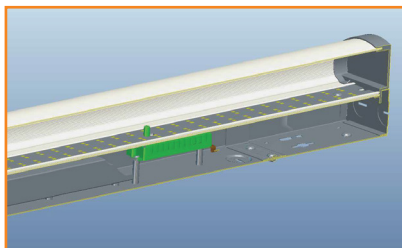
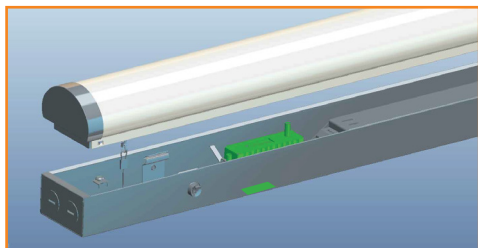


DIMENSIONS



H-Line: Bi Level Motion Sensor 1/2" Knock Out

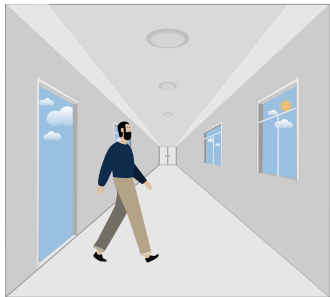
INSTALLATION METHOD



H-Line: Bi Level Motion Sensor 1/2" Knock Out

PERFORMANCE

1. Automatic ON/OFF Function



With sufficient daylight, even when motion detected, light remains OFF.



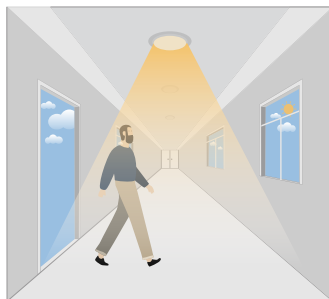
With insufficient daylight, the sensor turns light ON when motion gets detected,



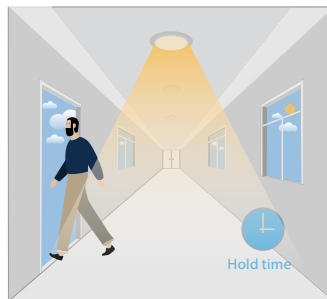
The sensor turns OFF light automatically after the holdtime when there's no motion detected.

2. Daylight Disable

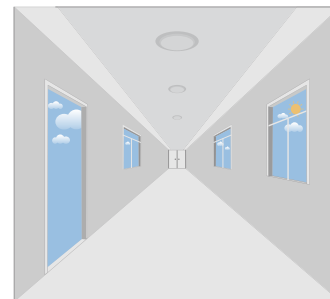
When daylight threshold is preset as "Disable", the sensor turns light ON when motion gets detected, and OFF after hold-time.



The sensor turns light ON when motion gets detected.

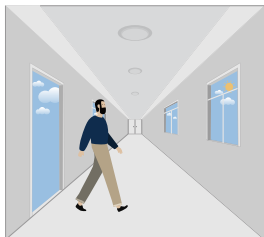


The sensor keeps light ON for holdtime period after motion leaves.

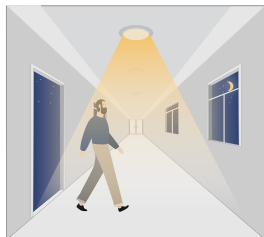


The sensor turns OFF light automatically after the holdtime.

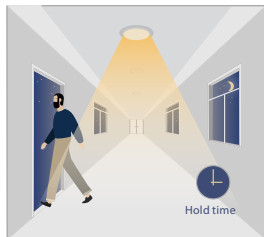
3. Corridor Function, Bi-Level Dimmable



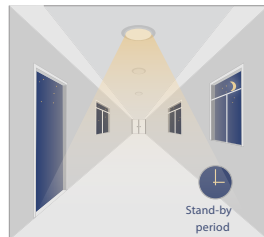
With sufficient daylight, the sensor keeps light OFF even motion gets detected.



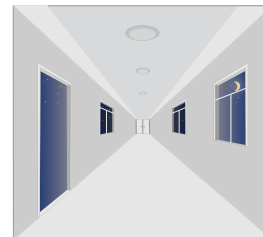
With insufficient daylight, the sensor turns light ON when motion gets detected,



After there's no motion detected, the sensor keeps light ON 100% for holdtime.



After holdtime, sensor dims light to standby dimming level for standby period.



The sensor turns OFF light automatically after the standby period when there's no motion detected.