



# H-Line: Bi Level Motion Sensor (Internal)



## TECHNICAL DATA

<b>OPERATING VOLTAGE</b>	DC: 10.5-15V
<b>OPERATING CURRENT</b>	<30mA
<b>STAND-BY POWER</b>	<0.5W
<b>CONTROL METHOD</b>	ON/OFF 0-10V Dimming
<b>MICROWAVE FREQUENCY</b>	5.8GHz±75MHz
<b>MICROWAVE POWER</b>	<0.3mW
<b>DETECTION AREA</b>	50% / 100%
<b>HOLD TIME</b>	5s / 30s / 1min. / 10min.
<b>DAYLIGHT THRESHOLD</b>	2Lux / 10Lux / 50Lux / Disable
<b>STAND-BY PERIOD</b>	0s / 30s / 20min. / +∞
<b>STAND-BY DIMMING LEVEL</b>	10%(1.9±0.2V) 20%(2.9±0.2V) 30%(3.9±0.2V) 50%(5±0.2V)
<b>MOUNTING HEIGHT</b>	Max. 16ft. (Ceiling Mounted)
<b>DETECTION RANGE</b>	DxH (Radius) 3-7 mx4m/9.84-22.97%ftx 13.12ft. (ceiling mounted)
<b>MOTION DETECTION</b>	0.5~1m/s
<b>DETECTION ANGLE</b>	150° (Wall Mounted) 360° (Ceiling Mounted)
<b>OPERATING TEMPERATURE</b>	-40°F~+176°F
<b>IP RATING</b>	IP20
<b>WARRANTY</b>	3 Years
<b>FUNCTION SETTING</b>	Dial Setting

Factory Default Setting: Detection area 100% / Hold Time 5s / Daylight Threshold Disable  
 Stand-By Period 0s / Stand-By Dimming Level 10%



ON/OFF Control



Stand-By Dimming Level



Detection Area



Hold Time



Daylight Sensor



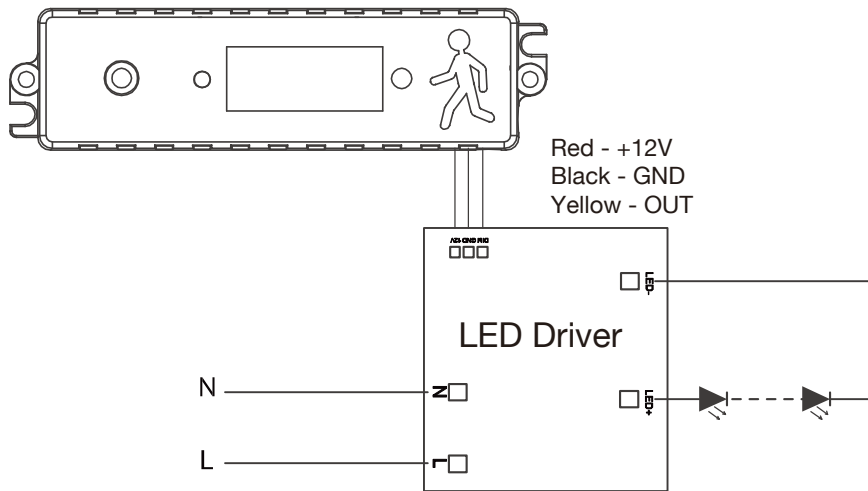
Stand-by Period

Series

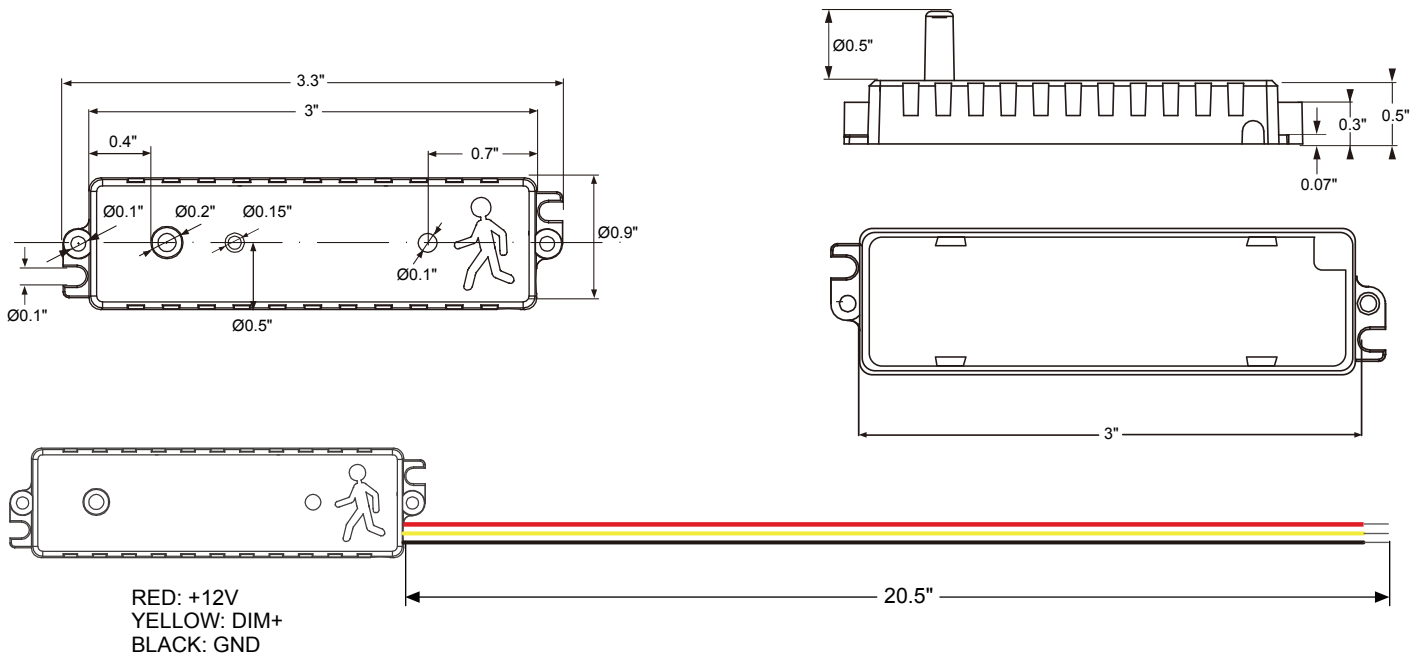
**HD016VCR-8**

# H-Line: Bi Level Motion Sensor (Internal)

## INSTALLATION

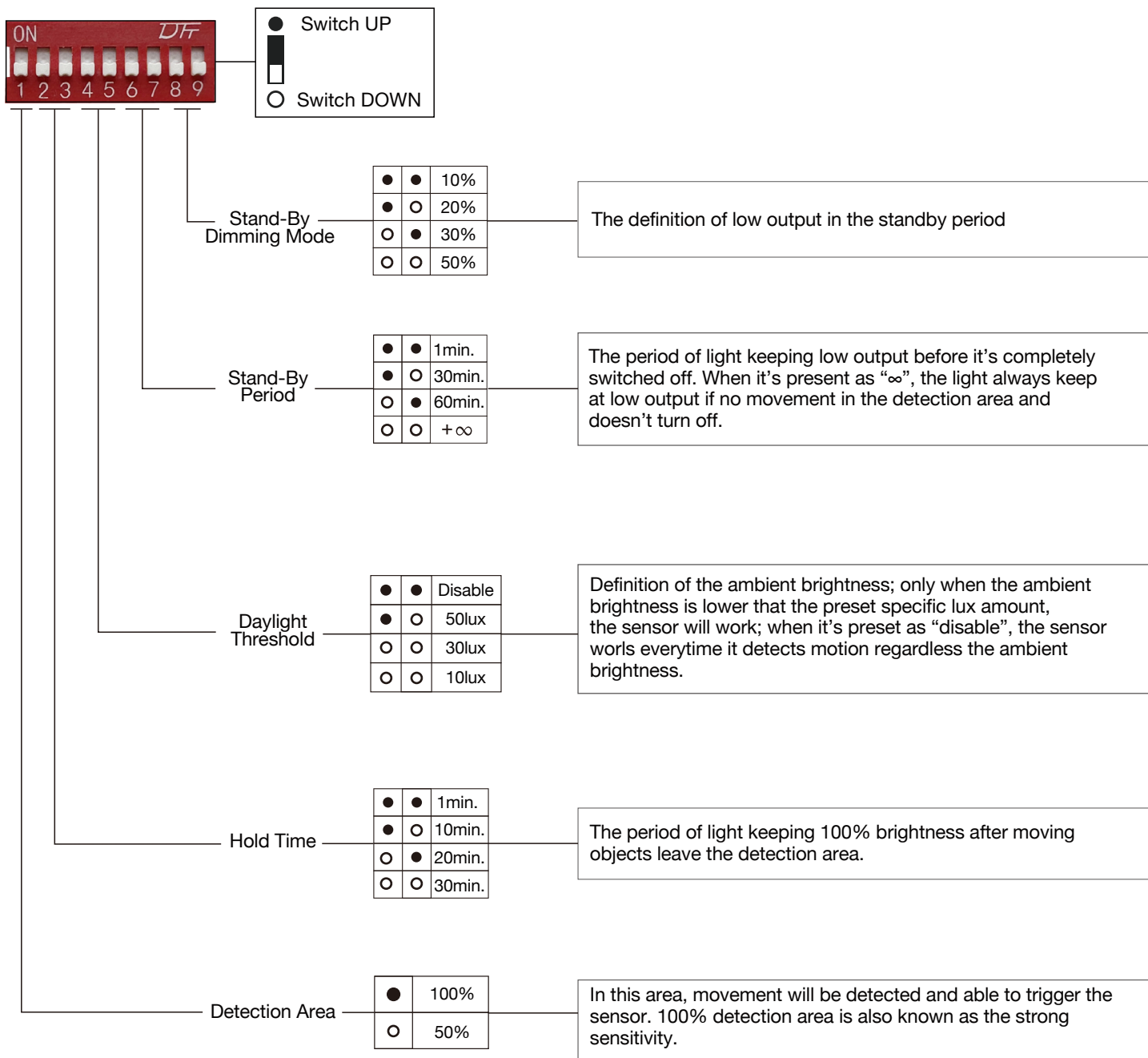
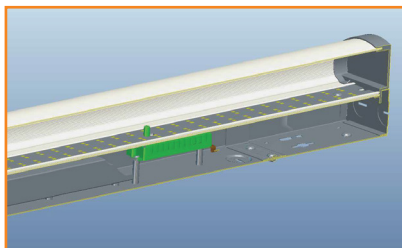
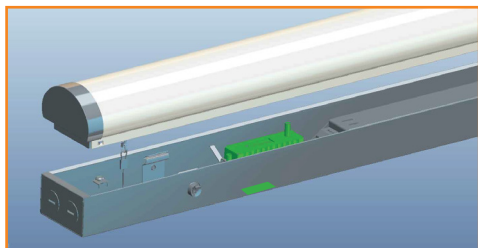


## DIMENSIONS



# H-Line: Bi Level Motion Sensor 1/2" Knock Out

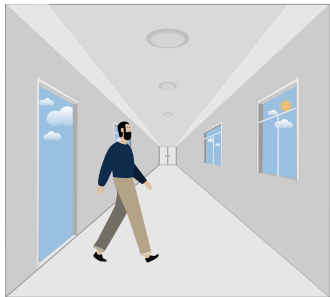
## INSTALLATION METHOD



# H-Line: Bi Level Motion Sensor 1/2" Knock Out

## PERFORMANCE

### 1. Automatic ON/OFF Function



With sufficient daylight, even when motion detected, light remains OFF.



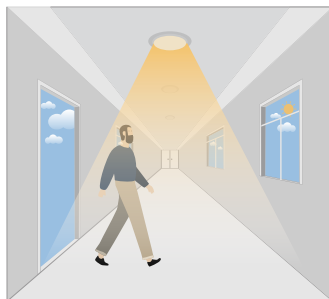
With insufficient daylight, the sensor turns light ON when motion gets detected,



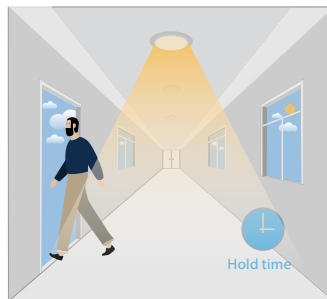
The sensor turns OFF light automatically after the holdtime when there's no motion detected.

### 2. Daylight Disable

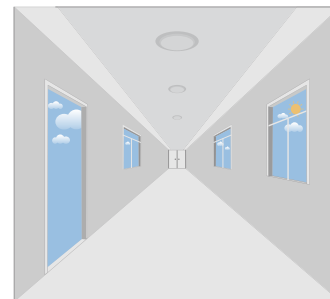
When daylight threshold is preset as "Disable", the sensor turns light ON when motion gets detected, and OFF after hold-time.



The sensor turns light ON when motion gets detected.

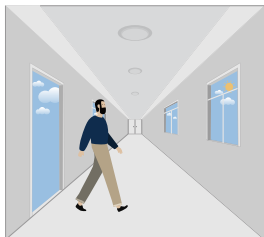


The sensor keeps light ON for holdtime period after motion leaves.

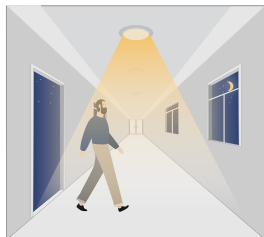


The sensor turns OFF light automatically after the holdtime.

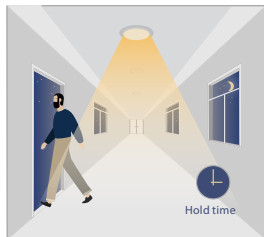
### 3. Corridor Function, Bi-Level Dimmable



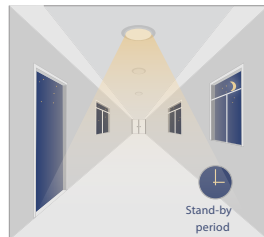
With sufficient daylight, the sensor keeps light OFF even motion gets detected.



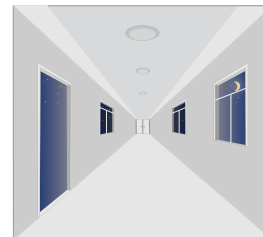
With insufficient daylight, the sensor turns light ON when motion gets detected,



After there's no motion detected, the sensor keeps light ON 100% for holdtime.



After holdtime, sensor dims light to standby dimming level for standby period.



The sensor turns OFF light automatically after the standby period when there's no motion detected.