

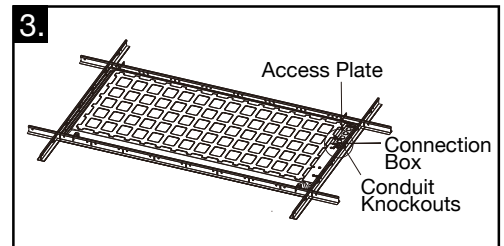
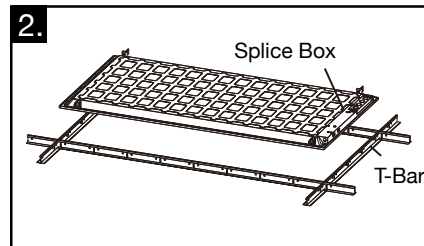
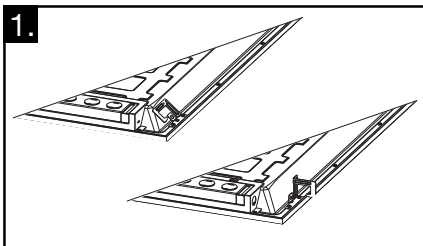
# LED Backlit Panel Mounting Instructions

## SAFETY PRECAUTIONS:

- WARNING: TO AVOID ELECTRIC SHOCK OR COMPONENT DAMAGE, DISCONNECT POWER BEFORE ATTEMPTING INSTALLATION OR SERVICING.
- WARNING: THIS PRODUCT MUST BE INSTALLED IN ACCORDANCE WITH THE NATIONAL LOCAL ELECTRIC CODES (NEC) AND ALL APPLICABLE FEDERAL, STATE AND LOCAL ELECTRIC CODES, AND SAFETY STANDARDS.
- WARNING: PLEASE FOLLOW THE CORRECT INSTALLATION INSTRUCTIONS TO INSTALL THE PRODUCT.
- WARNING: DO NOT USE THE PRODUCT IN WET LOCATIONS.

## INSTALLATION:

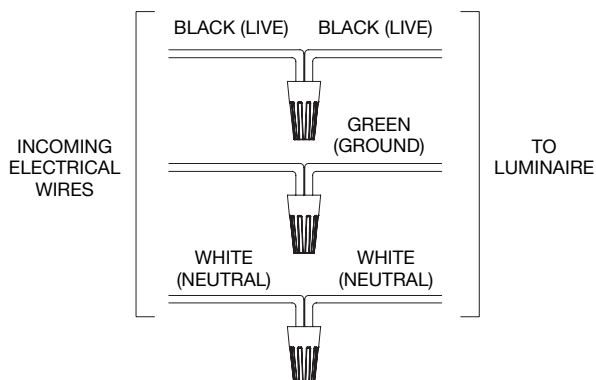
1. CAREFULLY UNPACK THE FIXTURE FROM ITS PACKAGING AND CHECK CONTENTS.
2. TURN OFF POWER AT CIRCUIT BREAKER.
3. LOCATE ALL FOUR EARTHQUAKE CLIPS ON THE BACK OF LUMINAIRE. TWIST EACH TAB AWAY FROM LUMINAIRE HOOK THEM ON THE T-BAR (SEE FIG. 1).
4. REST THE LUMINAIRE ON THE T-BAR OF THE CEILING SUSPENSION SYSTEM IN THE DESIRED LOCATION (SEE FIG. 2).



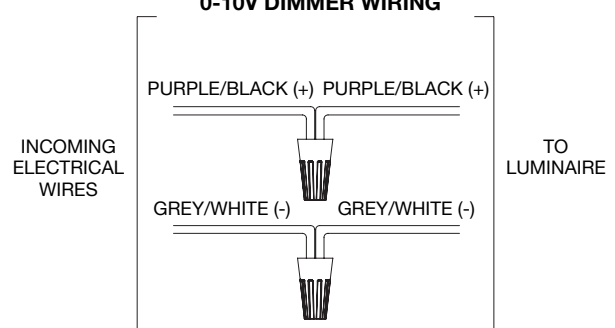
## INSTALLATION FOR WIRING:

1. OPEN THE CONNECTION BOX (SEE FIG. 3) AND CONNECT THE INCOMING ELECTRICAL WIRES TO THE SET OF POWER WIRES BLACK TO BLACK (LIVE), WHITE TO WHITE (NEUTRAL) AND GREEN TO GREEN (GROUND). SEE WIRING DIAGRAM 1.
2. FOR 0-10V DIMMING, MAKE SURE TO CONNECT THE SAME WIRE COLOR. SEE WIRING DIAGRAM 2.
3. CHECK THE WIRING, MAKE SURE EVERYTHING IS CORRECT. RECOVER THE CONNECTION BOX. THEN TURN ON POWER TO THE LUMINAIRE.

**WIRING DIAGRAM 1**



**WIRING DIAGRAM 2  
0-10V DIMMER WIRING**



## ADJUST WATTAGE & CCT BEFORE INSTALL:

1. SELECT DESIRED COLOR TEMPERATURE AND WATTAGE.

### SCHEMATIC WATTAGE ADJUSTMENT (3-SET POSITION)

| ITEM     | LEFT POSITION | MIDDLE POSITION | RIGHT POSITION |
|----------|---------------|-----------------|----------------|
| 1X4, 2X2 | 20W           | 30W             | 40W            |
| 2X4      | 30W           | 40W             | 50W            |

### COLOR TEMPERATURE SELECTION

### SCHEMATIC CCT ADJUSTMENT (3-SET POSITION)

| LEFT POSITION | MIDDLE POSITION | RIGHT POSITION |
|---------------|-----------------|----------------|
| 3500K         | 4000K           | 5000K          |

