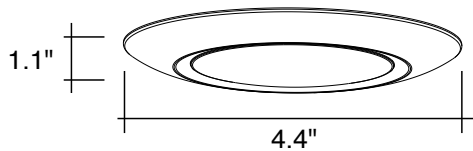


## LED LOW PROFILE SURFACE DISK LIGHT MOUNTING INSTRUCTIONS

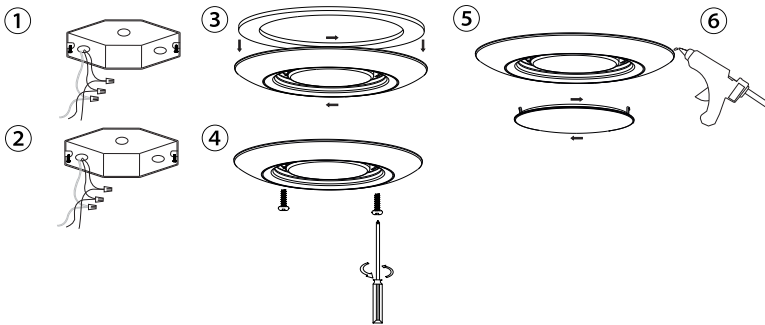
LED Disk Light provides surface mount light for new construction applications. Unit fits most 3", 4" junction boxes and can replace 4" recessed can lights to eliminate baffles & fire rated boxes. It also is suitable for use in dry, damp or wet locations.



**WARNING:** For your safety read and understand instructions completely before starting installation. Before wiring to power supply, turn off electricity at the fuse or circuit breaker box.



### SURFACE MOUNT INSTALLATION



- STEP 1** Prior to installation. Please install two screws (furnished) into the junction box. Do not drive screws completely to the end of the junction box.
- STEP 2** Connect supply wires to wires in fixture wiring box with proper size wire nuts or push wires into "push-in" connector. Connect white to white, black to black and green or bare copper wire to bare copper wire.
- STEP 3** The ground wire at the surface junction box may need to be secured to a ground screw.
- STEP 4** With a Phillips screwdriver, attach the disk light tightly to the J-Box.
- STEP 5** Complete the installation by twisting the diffuser on the disk light aluminum enclosure and lock the diffuser in place.
- STEP 6** The edge of the fixture and the ceiling use waterproof silicone to seal.

### **WARNING**

Risk of fire  
Supply conductors (power wires) connecting the fixture must be rated minimum 194° F if uncertain, consult an electrician.

Risk of electric shock  
disconnect power at fuse or circuit breaker before installing or servicing.

Risk of fire/electric shock  
If not qualified, consult an electrician.

### TECHNICAL SPECIFICATIONS

Voltage	120V, 60Hz AC operation
Wattage	10w-28pcs LED chips
Lumens	10W, 650 Lumens, CRI90
Diffuser	Translucent White PC Opal Diffuser
Hardware	All mounting screws and wire connectors
Tool Use	Philips screw driver and glue gun
Warranty	Five year, limited warranty