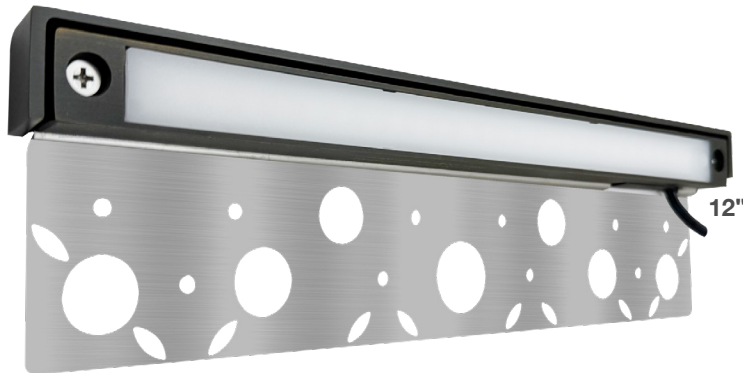


Low Voltage: Hardscape (Replaceable)

Solid Brass – Architectural Models

RGB+5-CCT



Detail Specifications:

- Finish: Oil Rubbed Bronze
- Housing: Corrosion Resistant Solid Brass
- Lamp Type: LED Integrated
RGB + 5-CCT: 27/30/35/40/50k
- Push button on lens
- IP Rating: Wet Location IP65
- Lens: Frosted glass

Applications:

- Landscape
- Walkways & Pathways
- Security Lighting
- Hospitality, Multi-Family
- Outdoor Corridors
- General Outdoor Lighting
- Residential, Commercial

Product Information:

- Heat resistant glass lens
- Water tight silicone ring for waterproofing
- Replaceable module for easy maintenance
- Packaging: Retail color box
- Master Box Quantity:
 - 4": 40
 - 7": 30
 - 12": 20

Driver Options:

- Compatible with 12V Low Voltage Drivers
- 9-17V

Mounting & Installations:

- Wire: 6' (72") SPT-1W 18 gauge wire lead
- Install as downlight or uplight
- Sold brass pipe with 1/2" knuckle stem

Warranty:

- Lifetime Anti-Corrosion Warranty

17 SCENE OPTIONS

| | | | |
|--------|--|----------------|--------------------------------|
| 2700K | | RED/GREEN/BLUE | • 2 Second Smooth Color Change |
| 3000K | | RED/GREEN/BLUE | • 2 Second Flash Color Change |
| 3500K | | ALL COLORS | • 2 Second Smooth Color Change |
| 4000K | | ALL COLORS | • 2 Second Flash Color Change |
| 5000K | | ALL COLORS | • 2 Second Smooth Color Change |
| WHITE | | ALL COLORS | • 2 Second Flash Color Change |
| RED | | ALL COLORS | • 2 Second Smooth Color Change |
| GREEN | | ALL COLORS | • 2 Second Flash Color Change |
| BLUE | | OFF | |
| ORANGE | | | |
| PURPLE | | | |
| CYAN | | | |

Series

LED-HS-4I-2W-RGB+5CCT-BR-ORB-LV

200lm

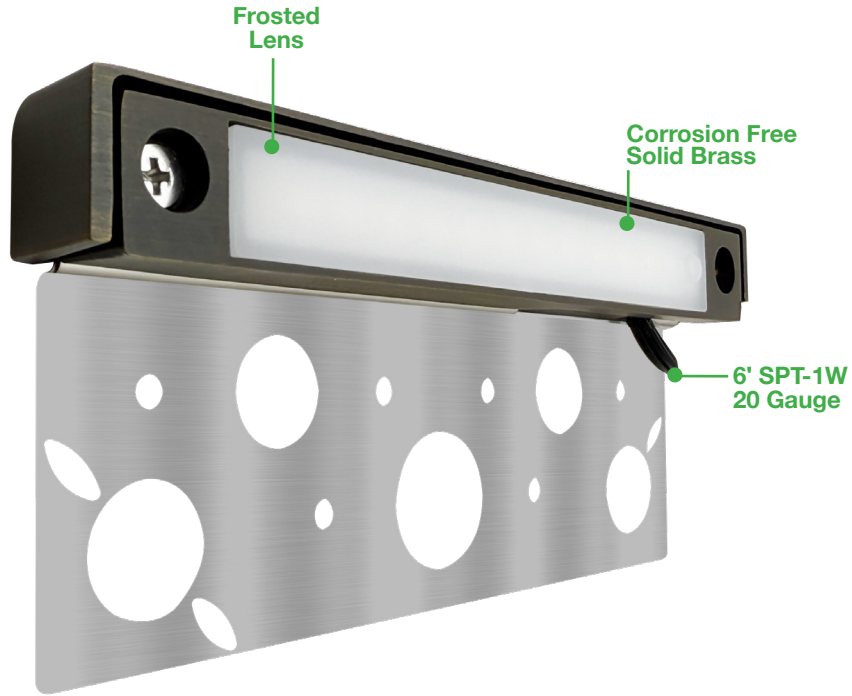
LED-HS-7I-3W-RGB+5CCT-BR-ORB-LV

200lm

LED-HS-12I-4W-RGB+5CCT-BR-ORB-LV

200lm

FEATURES



5-CCT Selectable Push Button

DIMENSIONS

