

LED-RHBL Installation Instructions



Do not use any electric generator to test the LED lamp. Please avoid using the led lamp in environment where there is smoke, sulfur, and corrosive substances. But if it's used in such environment, make sure the led lamp is well protected by an enclosed lampshade with dimension no less than below size, and materials made up of glass, semi-glass, or semi-metallic. There should be no covering on the surface of the lampshade to block heat dissipation.

POWER (W)	60/90/100	120/140/160
DIMENSIONS	14" x 14" x 13.8"	15.7" x 15.7" x 13.8"

PARTS/COMPONENTS INCLUDED IN KIT

- Installation Instructions
- Security cable
- LED Lamp

INSTRUCTIONS

- 100 degree lighting, UGR<30.
- Single CCT or CCT adjustable optional.
- Motion microwave sensor or motion PIR sensor optional, 0-10 V continuous dimming.
- Two dimming modes optional: segmented dimming, sensor dimming.
- Pure aluminum fins heatsink, no fans.
- Internal driver, input voltage AC120-277V.
- Sealant pouring for whole driver.
- Long lifespan and good heat dissipation.
- Direct replacement for Metal Halide lamp, easy installation.
- Fits many different fixtures to replace traditional lamps.
- Operating ambient temperature can up to 50°C.

APPLICATIONS

Widely used in supermarkets, warehouse, garage, home, office, hotel hospital, school, street, garden, etc.



INSTALLATION INSTRUCTIONS

WARNING: Please make sure the power is OFF before installation

1. Turn off the power switch.
2. Screw off the CFL or MHL or HPS and so on, see Figure (3)(4).
3. Take out the led corn light and screw on, see Figure (1).
If you want to install a sensor, please see page 4 for detailed installation instruction (Note: Pls make sure to take off the ballast before installing this led lamp, see Figure (4)).
Otherwise, the ballast will produce high-voltage resonance and breakdown the led lamp.)
4. If security rope is provided, please fix the rope on the lamp by hand, then fix the other end of the rope on the shell, see Figure (2).
5. Lamp CCT and dimming can be adjusted, see Figure (5).
6. Turn on the power switch. (Installation is Finished.)

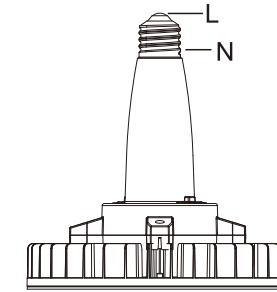


Figure 1

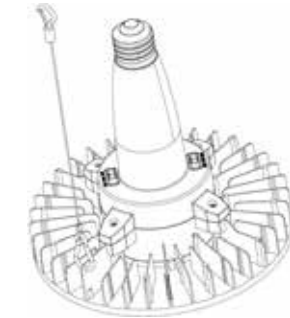


Figure 2



Security Cable

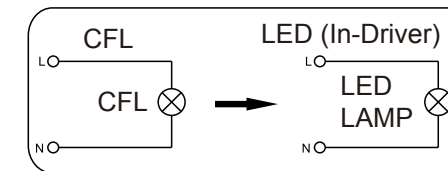


Figure 3

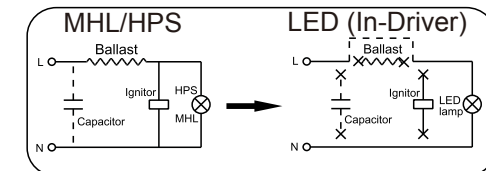


Figure 4

**CCT adjustable and dimming mode diagram
(Reference when adjusting one or both modes)**

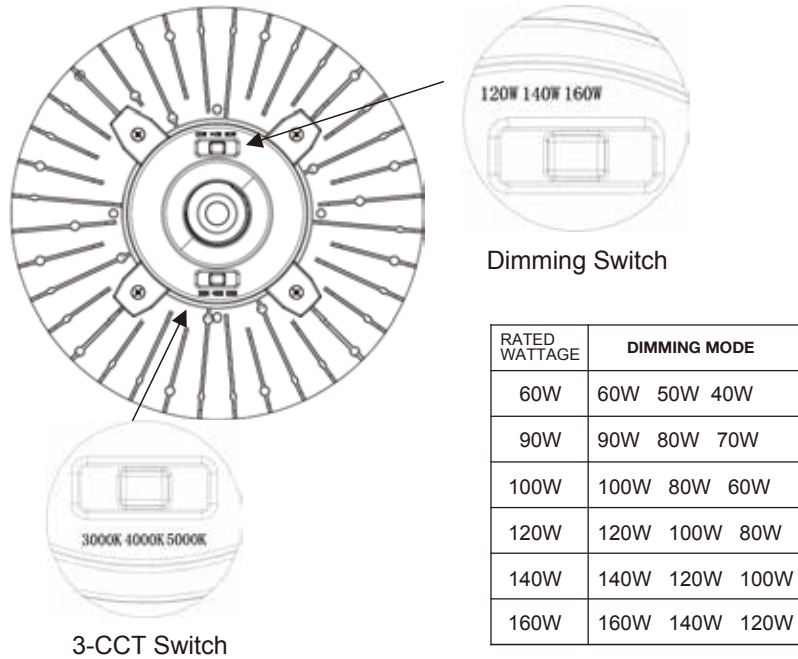


Figure 5

WARNING:

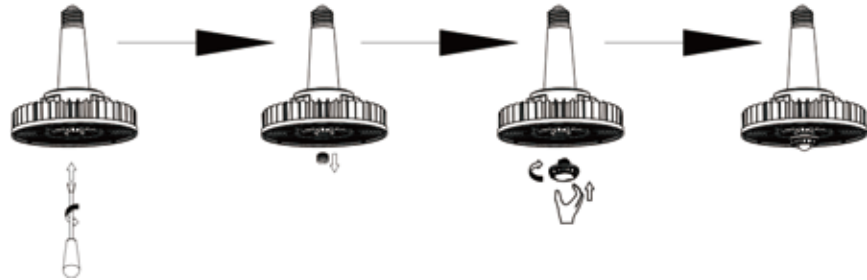
THIS DEVICE IS NOT INTENDED FOR USE WITH EMERGENCY EXITS
ADDED WEIGHT OF THE DEVICE MAY CAUSE INSTABILITY OF A
FREE-STANDING PORTABLE LUMINAIRE
USE ONLY WITH A PORTABLE TABLE LUMINAIRE THAT IS PROVIDED
WITH A SHADE.

**Installation of motion Microwave sensor or PIR sensor
(Twist-C Technology)**

Easy to install by using a straight screwdriver.

1. Use a flat-blade screwdriver to unscrew and remove the plug.
2. Twist on the motion microwave sensor or motion PIR sensor tightly according to demand.

Please note: There is no DIP switch on the motion microwave sensor, please refer to the remote control instruction to adjust the motion microwave sensor according to demand.



motion microwave sensor or motion PIR sensor