

# INSTALLATION INSTRUCTIONS FOR LED 5-CCT STEP LIGHTS

LED-STEP-LVR-SM-5-4W-5CCT-ALM-BZ-LV/LED-STEP-LVR-SM-5-4W-5CCT-ALM-BL-LV

## GENERAL

All electrical connections must be in accordance with local and National Electrical Code (N.E.C.) standards. If you are unfamiliar with proper electrical wiring connections, contact and obtain the services of a qualified electrician. Use UL or IEC approved wire only for input/output connections.

Remove fixture and mounting components from the box, and make sure that no parts are missing, by referencing the illustration in the illustration instructions.

**DIMMING:** This product is compatible with most common residential type dimmers. Dimming performance will depend upon dimmer, dimmer settings (dimmers with adjustments to brightness range), wiring method, and number of LED modules. For best results, set dimmer position at maximum before adjusting to a lower light level.



**PLEASE READ AND UNDERSTAND THIS ENTIRE MANUAL BEFORE ATTEMPTING TO ASSEMBLE, OPERATE OR INSTALL THE PRODUCT.**

### Warning:

Turn power off before installation, inspection, or removal. Use all necessary precautions while performing this procedure. Consult a qualified electrician to ensure correct branch circuit conductor. Min 194°F supply conductors. Properly ground electrical enclosure. IT IS IMPERATIVE THAT THE OUTLET BOX BE PROPERLY GROUNDED. DO NOT REVERSE THE HOT AND NEUTRAL CONNECTIONS, OTHERWISE SAFETY WILL BE COMPROMISED. This Integrated LED Fixture has no lamp/bulb to replace. MAKE SURE THAT YOU SELECT RIGHT CCT BEFORE YOU PUT ON THE COVER, IT IS DIFFICULT TO OPEN THE FACE COVER ONCE YOU FIX IT. DON'T SUBMERGE THE LIGHT BODY INTO WATER INSTALL IT IN AREA WITH HIGH SALTY MOISTURE OR CORROSIVE ENVIRONMENT WILL LEAD TO FAST CORROSION SINCE IT IS NOT DESIGN FOR THIS PURPOSE



## TROUBLESHOOTING

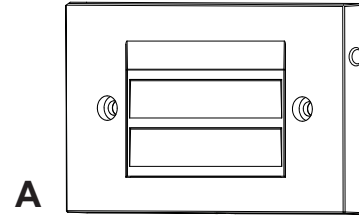
- Check that line voltage at fixture is correct.
- Ensure that there is voltage at lamp fixture wires. If there is no voltage, then check all connections.
- Check that fixture is grounded properly. If fixture does not light:
- Check switch to ensure that there are no defects.
- Check fuse/circuit breaker for trips, then check wiring connections.



## CLEANING AND MAINTENANCE

- CAUTION:** Ensure fixture temperature is cool enough to touch. **DO NOT** clean or perform maintenance while fixture is energized.
- Clean lens and fixture with non-abrasive cleaning solution.
  - Do not open fixture to clean LED. Do not touch the LED
  - Do not spray liquid directly on to LED, LED driver or wiring.

## COMPONENT LIST



A Light Unit



B Waterproof Wire Nut



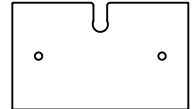
C Tapping Screw



D 6-32 Machine Screw



E Anchor



F EVA gasket

## FIXTURE MOUNTING INSTRUCTIONS (MASONRY OR HARDSCAPES)

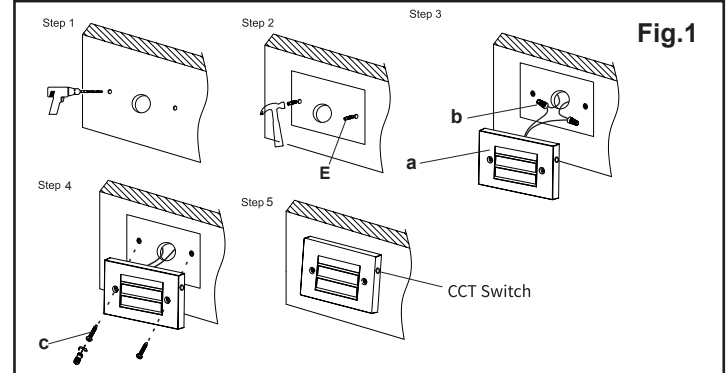


Fig.1

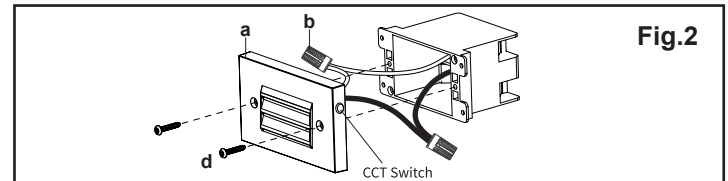


Fig.2

Installation Guide A or B)

Method A(Fig.1)

1. Drill two holes on the wall or surface
2. Insert two anchors into the holes and fix EVA gasket to fill gap between light unit and wall
3. Connect fixture's input wires with transformer's output wires using attached wire nuts
4. Put wires and connectors into wall or pipe. fix light body into anchor.
5. Select CCT from 2700K/3000K/3500K/4000K/5000K by press switch to right position.

Method B(Fig.2)

1. Connect fixture's input wires with transformer's output wires using attached wire nuts.
2. Put wires and connectors into junction box, then fix light body.
3. Select CCT from 2700K/3000K/3500K/4000K/5000K by press switch to right position.