

# 5" / 9" / 11" Trimless Surface Mount Installations



INSTRUCTIONS PERTAINING TO RISK OF FIRE OR INJURY TO PEOPLE  
READ ALL INSTRUCTIONS

**IMPORTANT SAFETY  
INSTRUCTIONS  
SAVE THESE INSTRUCTIONS**

## PREPARATION

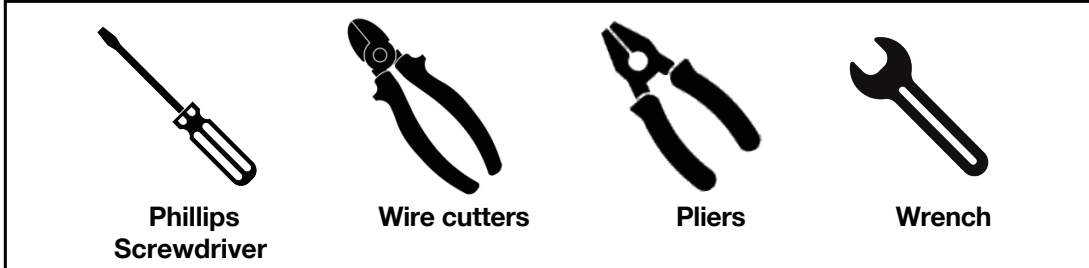
Read all instructions before installing fixtures. Keep for future reference.

This fixture must be installed in accordance with the applicable installation code, by a person familiar with the construction or operation of the product and the hazards involved.

## PRE-INSTALLATION

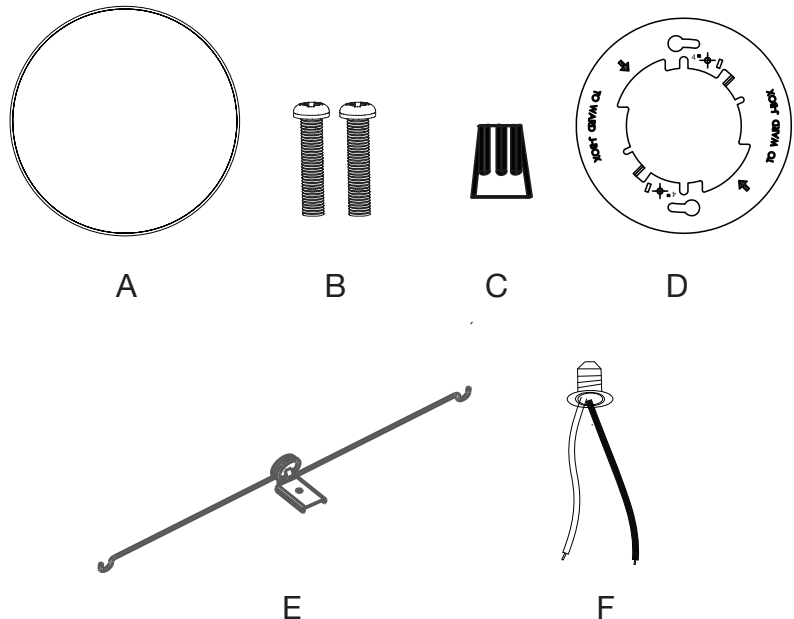
- Turn off electrical power before starting installation of light fixture.
- **CAUTION: RISK OF FIRE.** Consult a qualified electrician to ensure correct brand circuit conductor.
- For external use only. Recommend applying waterproof silicone to seal around trim and ceiling.

## TOOLS AND MATERIALS REQUIRED:



## CONTENTS:

| PART | DESCRIPTION            | QTY | NOTE     |
|------|------------------------|-----|----------|
| A    | Slim flush mount light | 1   |          |
| B    | Mounting screws        | 2   |          |
| C    | Wire nut               | 3   |          |
| D    | Mounting Plate         | 1   |          |
| E    | Springs                | 2   | Optional |
| F    | E26 lamp holder        | 1   | Optional |



## INSTALLATION: OPTION 1 - FLUSH MOUNT

**STEP 1:** Prior to installation, install mounting plate into electrical outlet box with mounting screws.

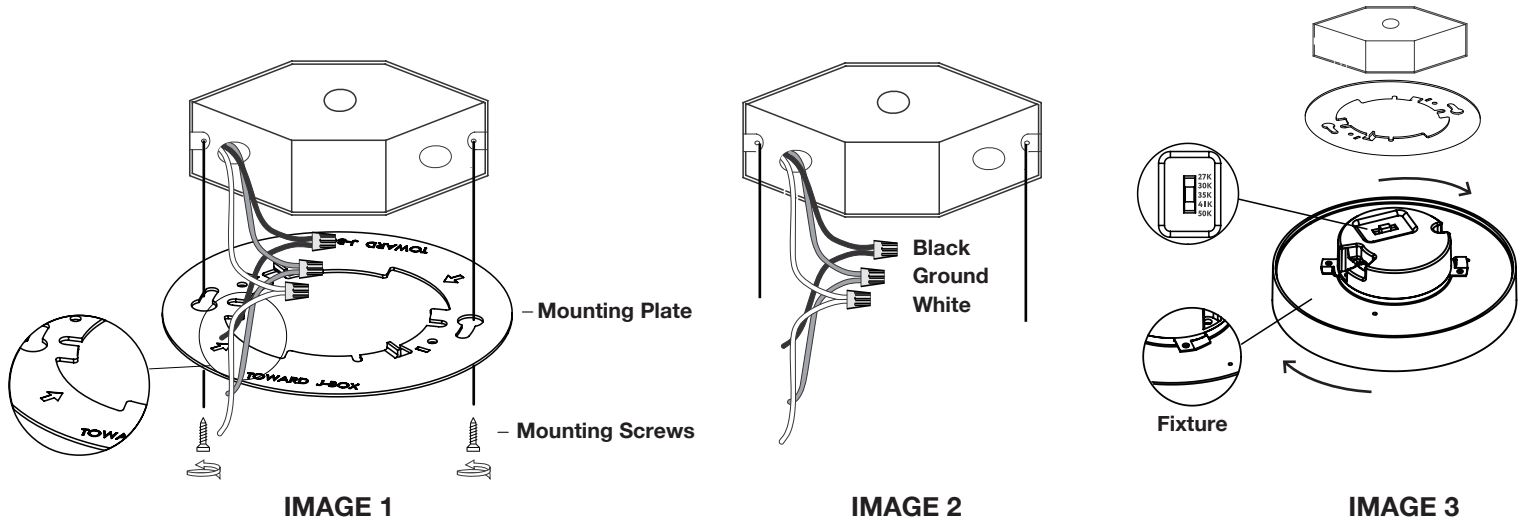
Drive screws completely to the end of the junction box.

**STEP 2:** Connect supply wires to wires on the fixture with wire nuts, or push wires into quick connectors.

Connect white to white, black to black and copper wire to copper wire as grounding connection.

**STEP 3:** Complete installation by pushing the fixture into the mounting plate.

## ELECTRICAL OUTLET BOX



## INSTALLATION: OPTION 2 - RETROFIT RECESSED CAN

**STEP 1:** Insert wires into Quick Connector. Black to black, white to white. Attach ground wire to ground screw in recessed can.

**STEP 2:** Place E26 lamp holder into socket base.

**STEP 3:** Connect quick connectors and tuck all wires into recessed can. Squeeze springs and push up into recessed can.

