

LED Strip Installation Instructions



1. Make sure power off before installation or disassembly.
2. Two workers are needed to install the linear.
3. The maximum connection Power is 900W
4. Make sure the connection of 2 lights can only be end B of one light to end B of the other light or end B of one light to end A of the other light.

CAUTION:

1. Can not use the electric generator to test the LED light.
2. Please abide by related country, regional and local law and regulations when install this fixture.
3. Please turn off the power before installation or maintenance.
4. Proper earth grounding is required to ensure safety.

NOTICE:

1. To avoid possibility of electrical shock or fire, the installation personnel must have professional electric knowledge.
2. Please wear gloves to avoid injury before installation.
3. If any smoke or spark of the wire happened, please turn off the power immediately and notify relevant personnel.

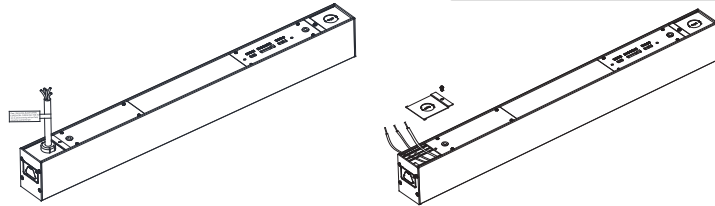
ATTENTION:

1. Please check if there is any damage during shipping. If so, please contact manufacturer timely.
2. Please read the installation instruction carefully to check whether all the accessories are complete. After confirmation, then install the fixture according to installation steps.

Wiring Diagram & Instruction:

1. Dimming functions are available in this high bay light:
2. Constant current can be achieved by 0/1-10VDC dimming;
3. PWM signal dimming;
4. Variation of resistance unit dimming.

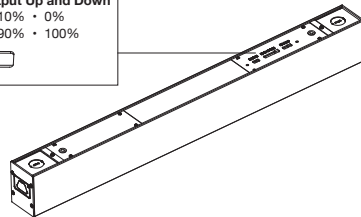
L: Black
N: White
⊕: Green/Yellow
DIM +
DIM -



Please choose the appropriate dimming way according to your needs.
You can also choose not to use this function.

CCT, wattage, up & down light output ratio selectable:

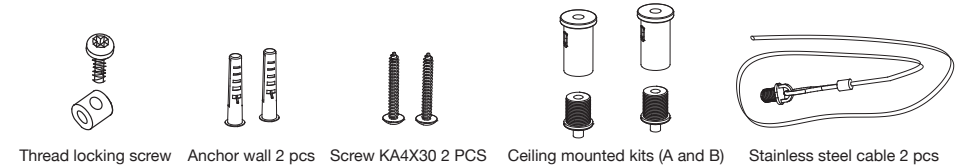
Wattage Adjustable	Color Tunable	Adjustable Light Output Up and Down
20%~100%	50K 40K 35K 30K 27K	20% • 15% • 10% • 0% 80% • 85% • 90% • 100%



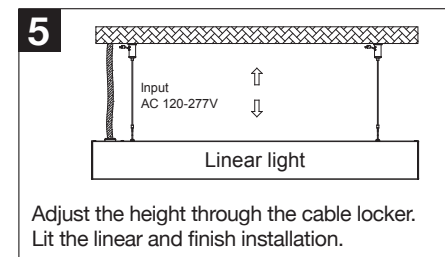
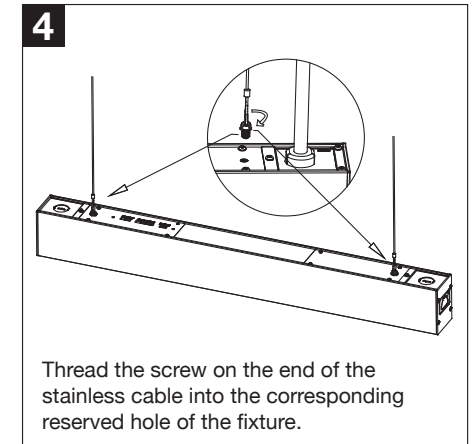
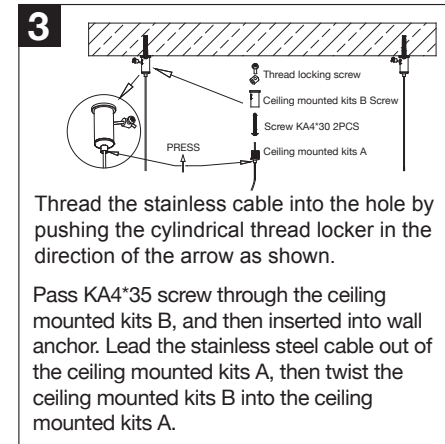
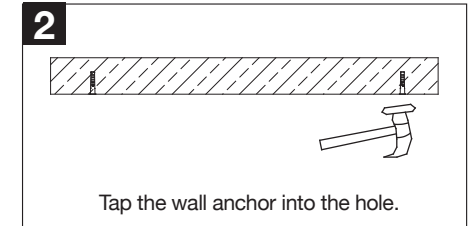
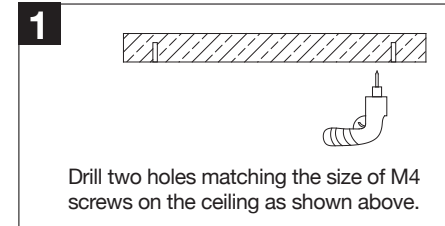
Description:	
This product is 0/1-10V dimming, below dimmers are recommended:	
Brand	Model
LUTON	NTSTV-DV
LEVITON	DS710-10Z / IP710
LEGRAND	RH4FBL3PW

Installation Instructions of LED Linear Light — Suspension Mounting:

1. Installation Kits:

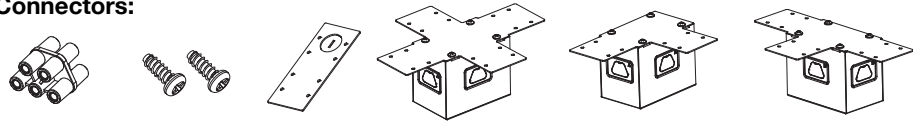


2. Installation Steps for Single Linear Light:



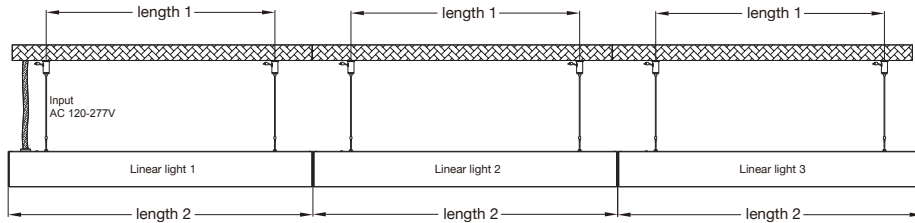
Multi shapes installation instruction: Straight, L, T and +

Connectors:

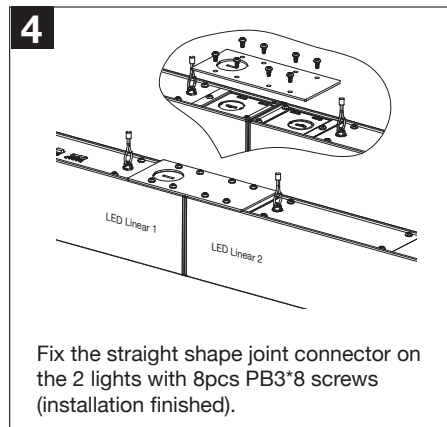
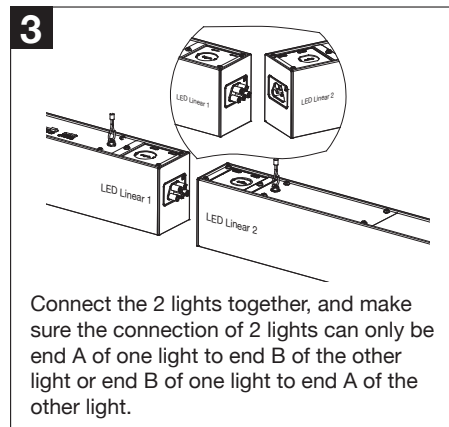
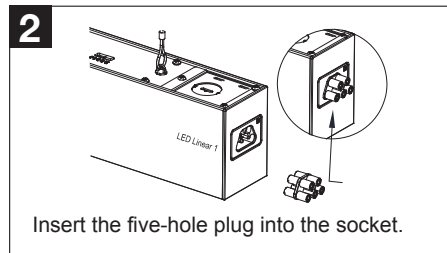
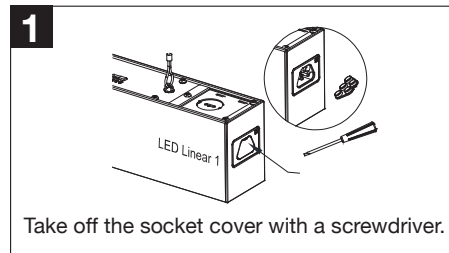


five-hole socket PB3*8 screws PB3*8 screws + shape joint nnector L shape joint connector T shape joint connector

1. Linear connection installation steps: connection of multiple lights.



LED linear	Length 1	Length 2
2FT	451±10mm	601±5mm
4FT	1070±10mm	1219±5mm
8FT	2288±10mm	2438±5mm



2. L shape joint installation steps.

