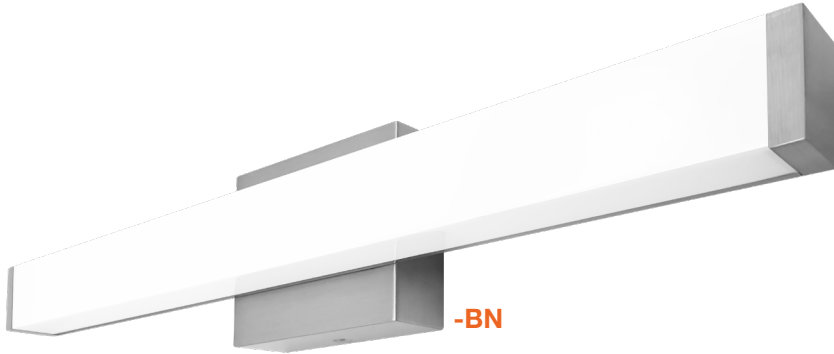
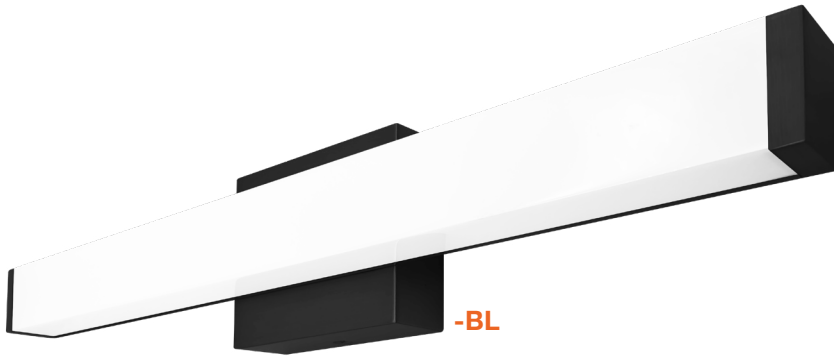


Vanity Fixtures

Contemporary Square



-BN



-BL



FRONT VIEW

Detail Specification:

- Finishes: Black & Brushed Nickel
- IP Rating: Damp Location
- Beam Angle: 140°
- Chip: SMD 2835, R9 >50, CRI >90
- Operating Temperature: -40° - 114° F
- Lens: Frosted Acrylic, non-yellowing
- Average life (L70) of 50,000 hours

Applications:

- Bathrooms & Lavatories
- Hallways & Corridors
- Residential & Multifamily
- Education, Healthcare, Retail, Hospitality

Product Information:

- Available in 3 sizes: 22", 33", 45"
- Contemporary square design
- Select-n-Switch Technology: 5-CCT + 3-Power Selectable

Driver Options:

- Tri-Mode Dimming: 0-10V, Triac, ELV dimmable down to 5%
- THD: <20% (+/-5% tolerance), PF >0.9, 50/60Hz
- Built in 2.5Kv Surge Protector
- Flicker Free

Mounting & Installation:

- 30/40 Junction Box
- Surface mount bracket included

Certifications:

- ETL Listed for USA and CA
- CA Title 24 JA8-2022 CEC Listed
- 5 Year Limited Warranty
- FCC CFR 47, GCC Part 15, Subpart B:2017

Series

- LED-VT-SQFT-22-3P19-5CCT**
21.5" Length
- LED-VT-SQFT-33-3P30-5CCT**
33" Length
- LED-VT-SQFT-45-3P36-5CCT**
45" Length

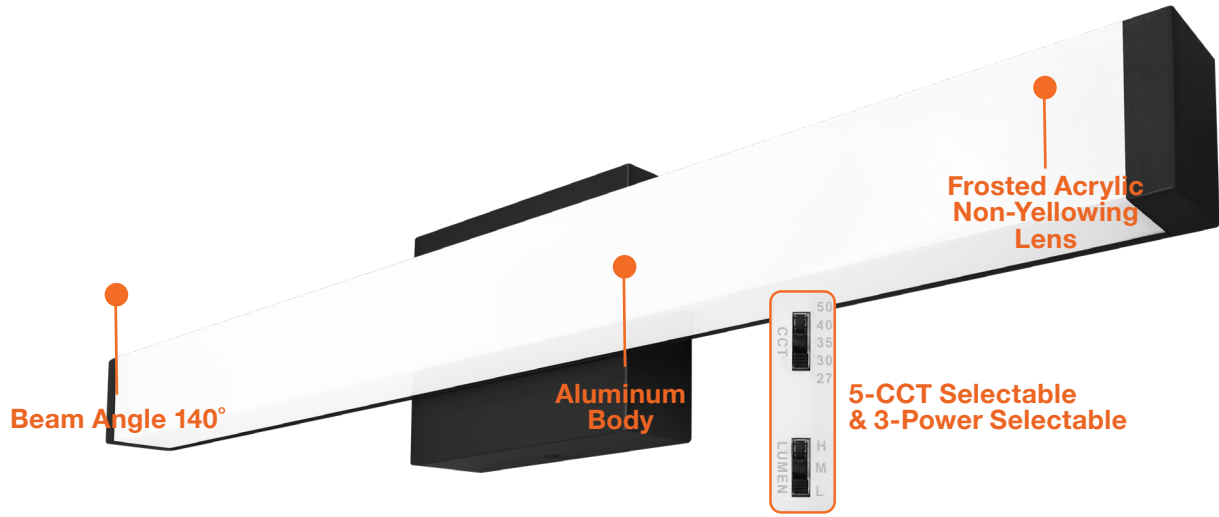
Finish

- BN**
Brushed Nickel
- BL**
Black

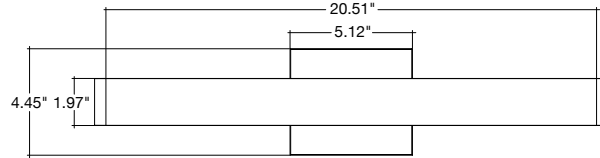
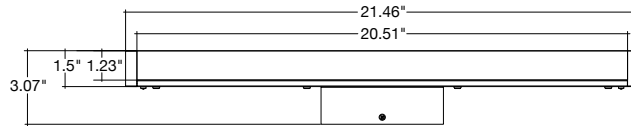
Vanity Fixtures

Contemporary Square

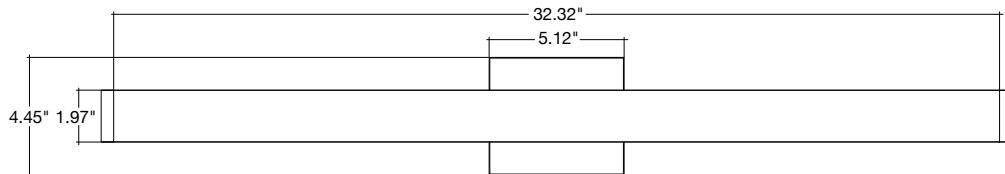
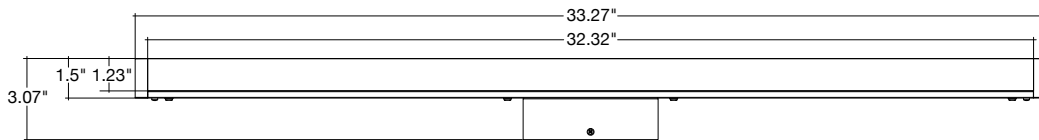
FEATURES



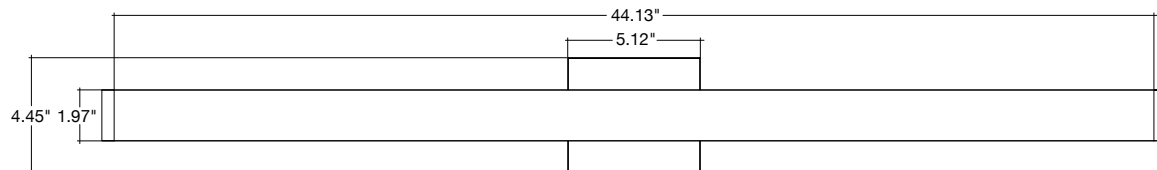
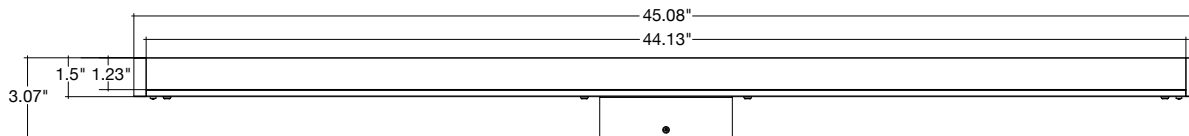
DIMENSIONS



22"



33"



45"