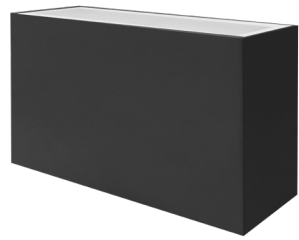
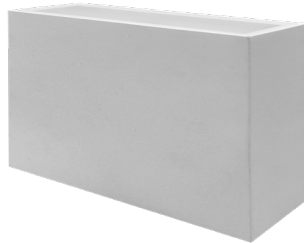


M-Line: Modern Square Sconce Light

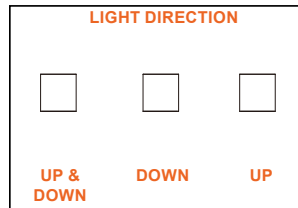
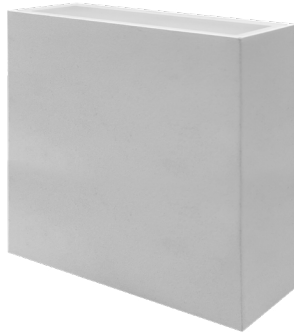
5-CCT Selectable + Selectable Light Direction



5"x10"



12"



Detail Specification:

- Finish: Black or White
- IP Rating: Wet Location IP65
- Beam Angle: 120° standard
- 5-CCT: 27/30/35/40/50K Selectable
- Chip: SMD 2835, R9 >50, CRI >90
- Operating Temperature: -40° - 122° F
- Lens: Clear glass
- Average life (L70) of 50,000 hours

Applications:

- Doorways
- Walkways & Pathways
- Wall Mount
- Hospitality, Multi-Family
- Outdoor Corridors
- General Indoor or Outdoor Lighting
- Residential, Commercial and Industrial

Product Information:

- Sturdy die-cast aluminum housing finished with corrosion free powder coat
- Ideal for indoor or outdoor use
- Selectable Light Direction: Up & Down, Up or Down
- Select-n-Switch Technology: 5-CCT Selectable
- Instant-On to full brightness

Driver Options:

- UNV: 120-277V (Triac Dimmable on 120V)
- Built in 6Kv Surge Protector
- THD: <20% (+/-5% tolerance), PF >0.9, 50/60Hz

Mounting & Installation:

- Mounts to 3 or 4" J-box
- Covers a standard 4" recessed j-box

Certifications:

- ETL Listed for USA and CA
- Approved for CA T24
- 5 Year Limited Warranty
- FCC CFR 47, GCC Part 15, Subpart B:2017

Series

LED-WSC-5X10-UD-24W-5CCT

5"x10" • 2,400lm (1,200 up/down)

LED-WSC-12-UD-30W-5CCT

12"x12" • 2,700lm (1,350 up/down)

Finish

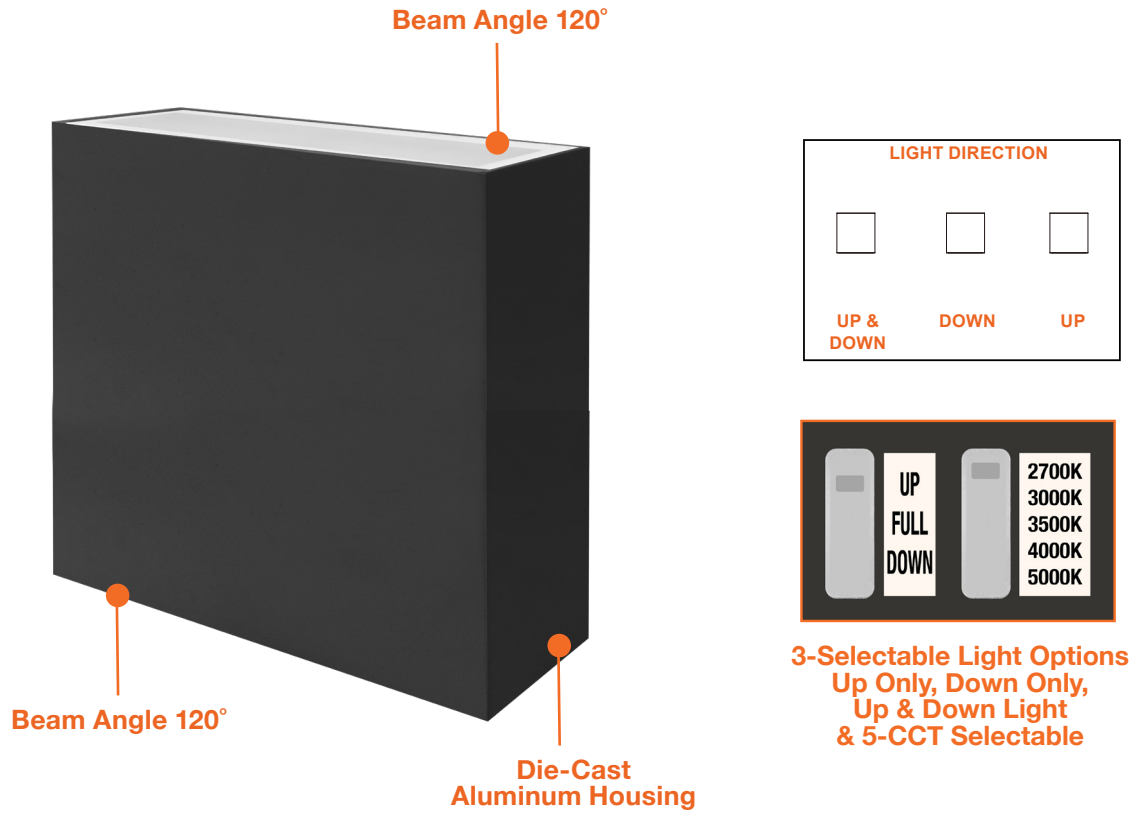
WH
White

BL
Black

M-Line: Modern Square Sconce Light

5-CCT Selectable + Selectable Light Direction

FEATURES



DIMENSIONS

